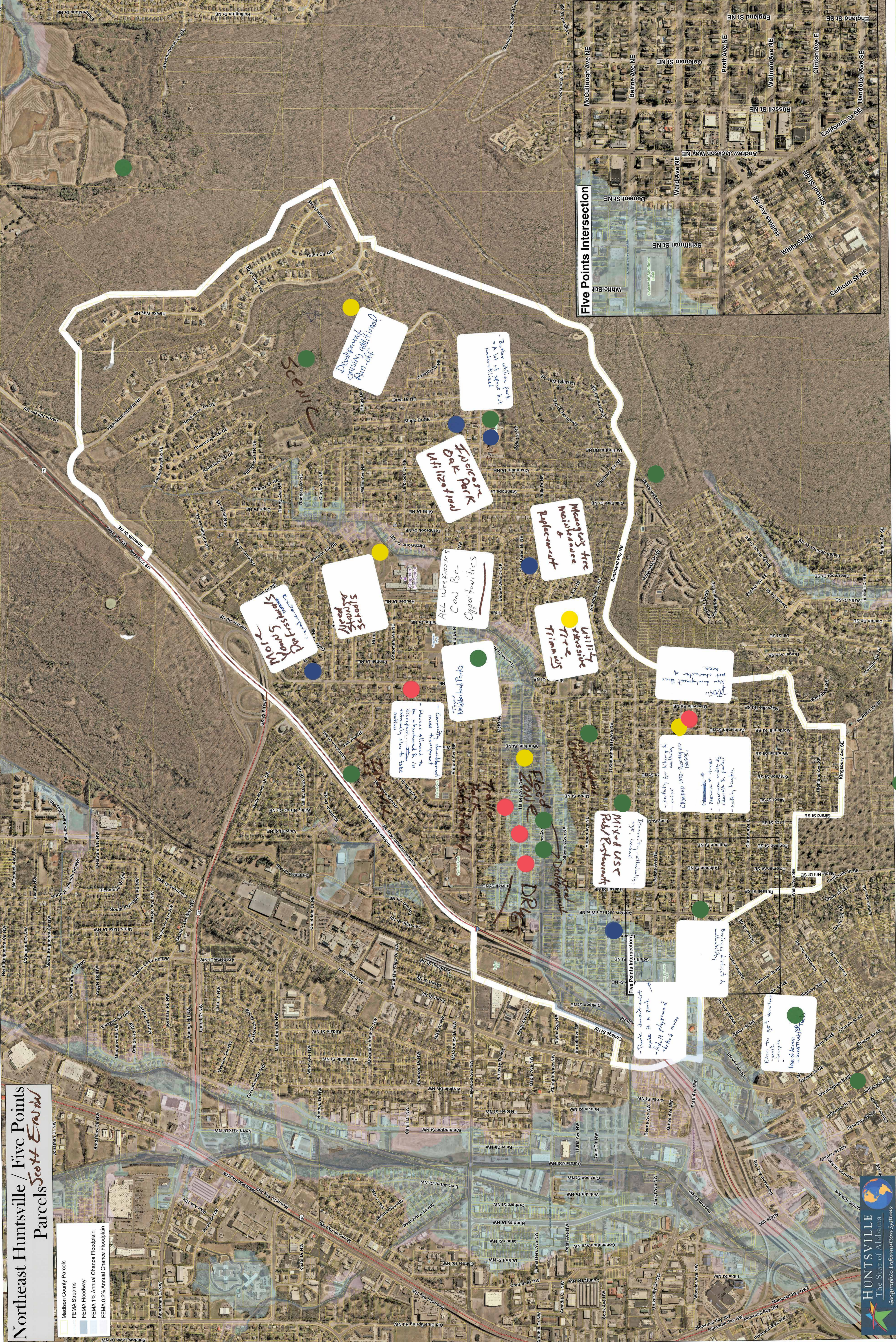


# Northeast Huntsville / Five Points Parcels Scott East

- Madison County Parcels
- FEMA Streams
- FEMA Floodway
- FEMA 1% Annual Chance Floodplain
- FEMA 0.2% Annual Chance Floodplain

## Five Points Intersection



Scenic

Development causing additional run-off

There's a lot of space but underutilized

Five Points Park Utilization

Microgreen tree replacement & placement

Utility tree trimming

New development in this area

- safety of bike walking
- crimes
- Changes with people use

Mixed Use Pub/Restaurants

Five Points Intersection

- Route doesn't exist
- make it a park
- Adult playground
- bike path

- Esse to get downtown
- bicycle
- Edge of Access
- landscaping

All water users can be opportunities

- Community development
- more investment
- houses allowed to be abandoned & in extremely slow to take

More Debris Streets

Streets need