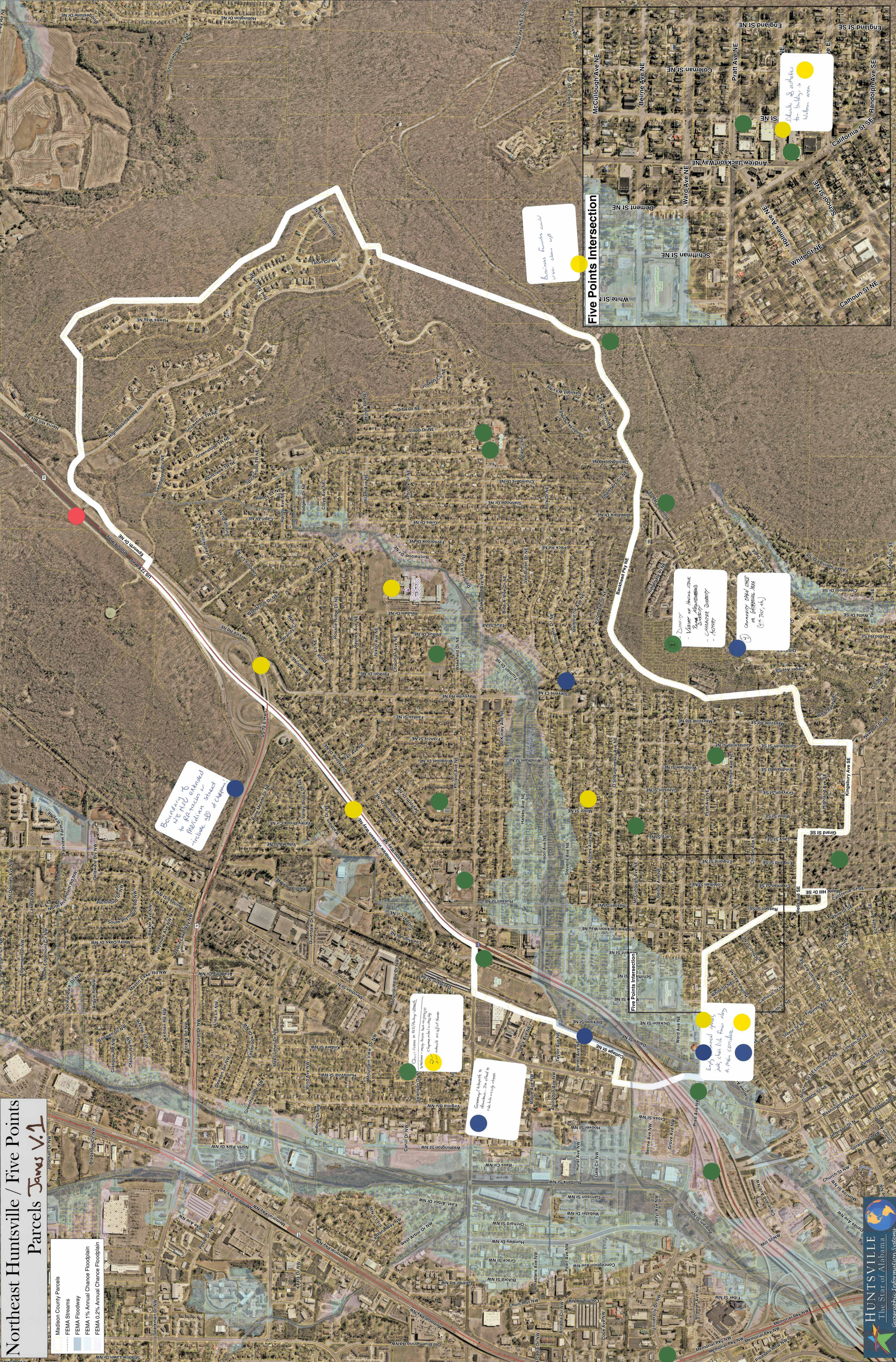


Northeast Huntsville / Five Points Parcels James V.1

- Madison County Parcels
- FEMA Streams
- FEMA Floodway
- FEMA 1% Annual Chance Floodplain
- FEMA 0.2% Annual Chance Floodplain



Business to NE and extend to Madison street include all of them!

Business fronts could use clean up

Woods & artifacts to build in within area

Demerol
- Winner of House of the Future
- CAROLAN QUINCY - ARCHITECT

Community development on (Huntsville, Ala) (1/4 1/2)

Cherry houses to 657 (Huntsville, Ala) (1/4 1/2)

Greenery adjacent to streets can affect to make better streets

Employment space just east of Five Points area