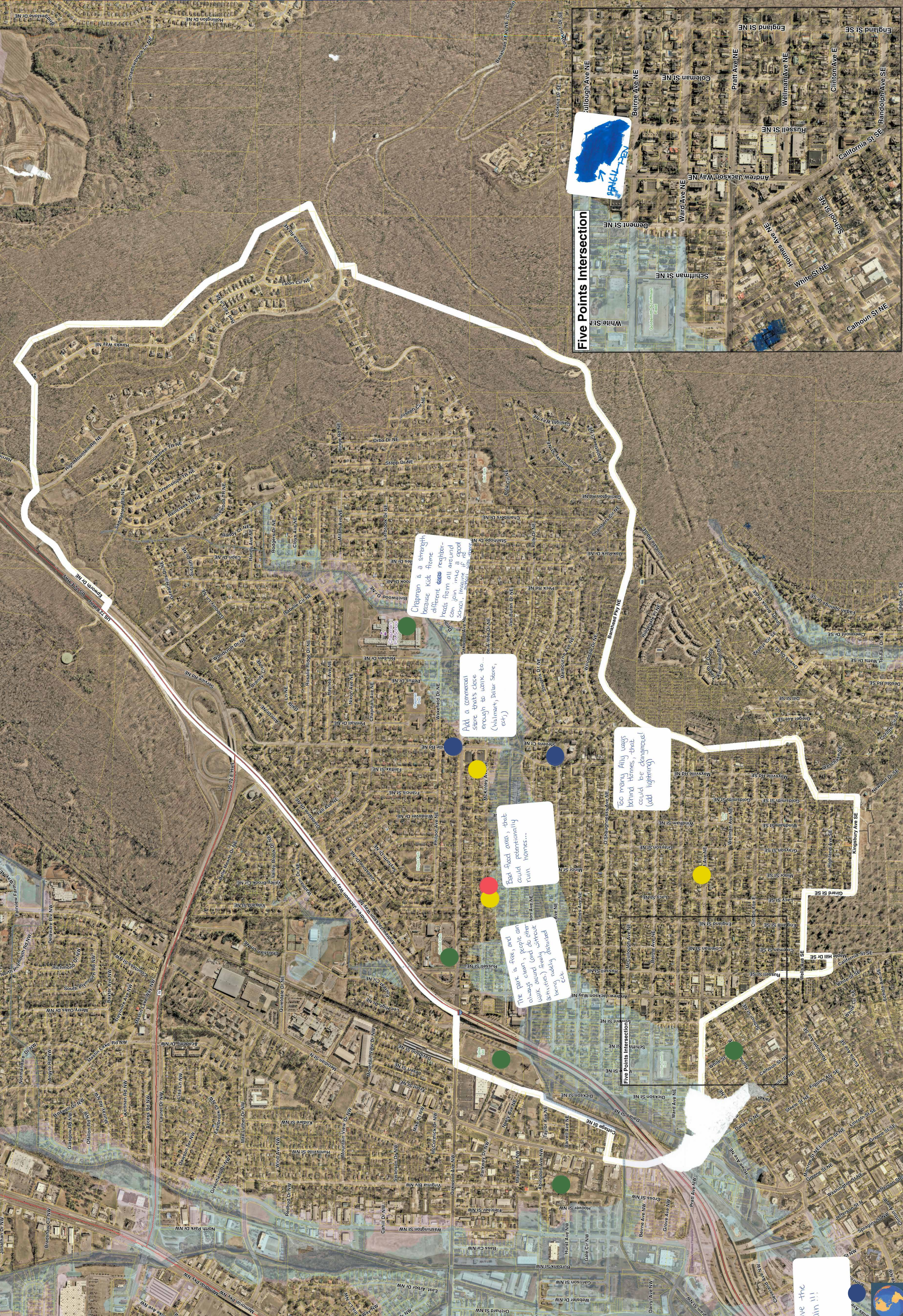


Northeast Huntsville / Five Points Parcels James M.

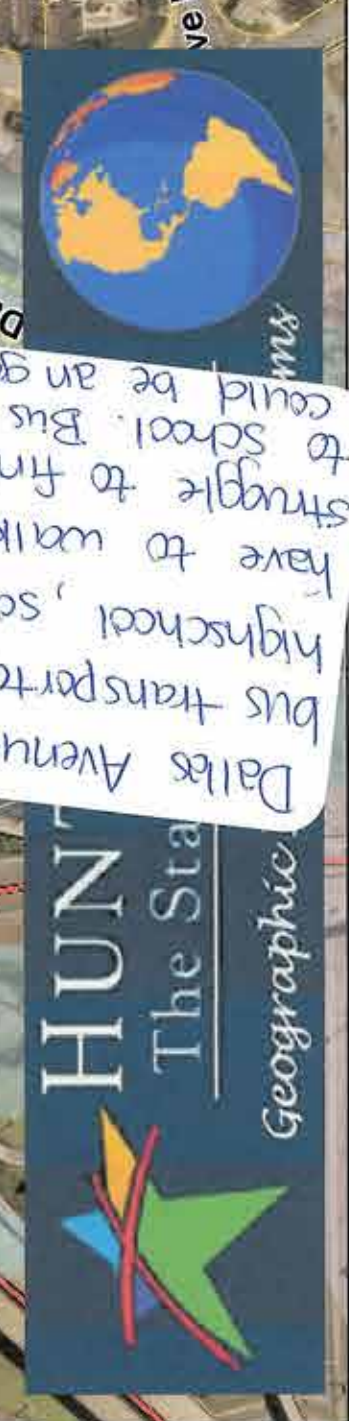
- Madison County Parcels
- FEMA Streams
- FEMA Floodway
- FEMA 1% Annual Chance Floodplain
- FEMA 0.2% Annual Chance Floodplain



Remove the train!!!

Let's America has no historical, so many kids have to walk or struggle to find a street to get to school. The train could be an asset.

HUN The Station Geographic



Five Points Intersection

