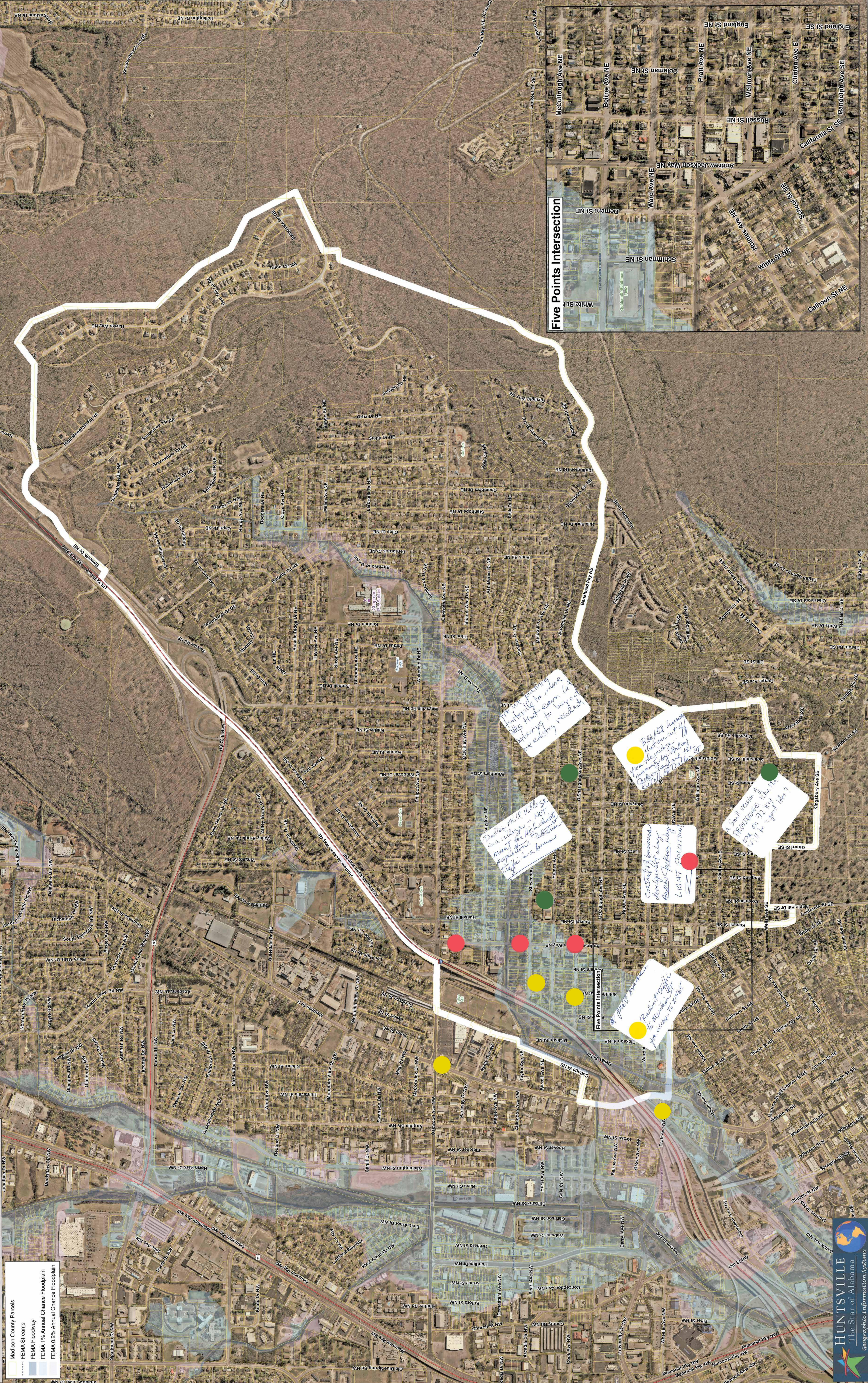


Northeast Huntsville / Five Points Parcels

- Madison County Parcels
- FEMA Streams
- FEMA Floodway
- FEMA 1% Annual Chance Floodplain
- FEMA 0.2% Annual Chance Floodplain



For the machine to move to Huntsville to move to Dallas that earn to pay for to buy a new existing residents

Dallas Mill Village is a village - NOT meant for high density population. Parking traffic is a bonus

Blocked lanes from the one cut off community by the Parkway and the Central of Dallas

Control of business development along the Andrew Jackson way LIGHT RAILWAY

A small version of the Mill Village on 75 may be the best idea?

Mill Village Park to Mill Village for access to 2815

Five Points Intersection