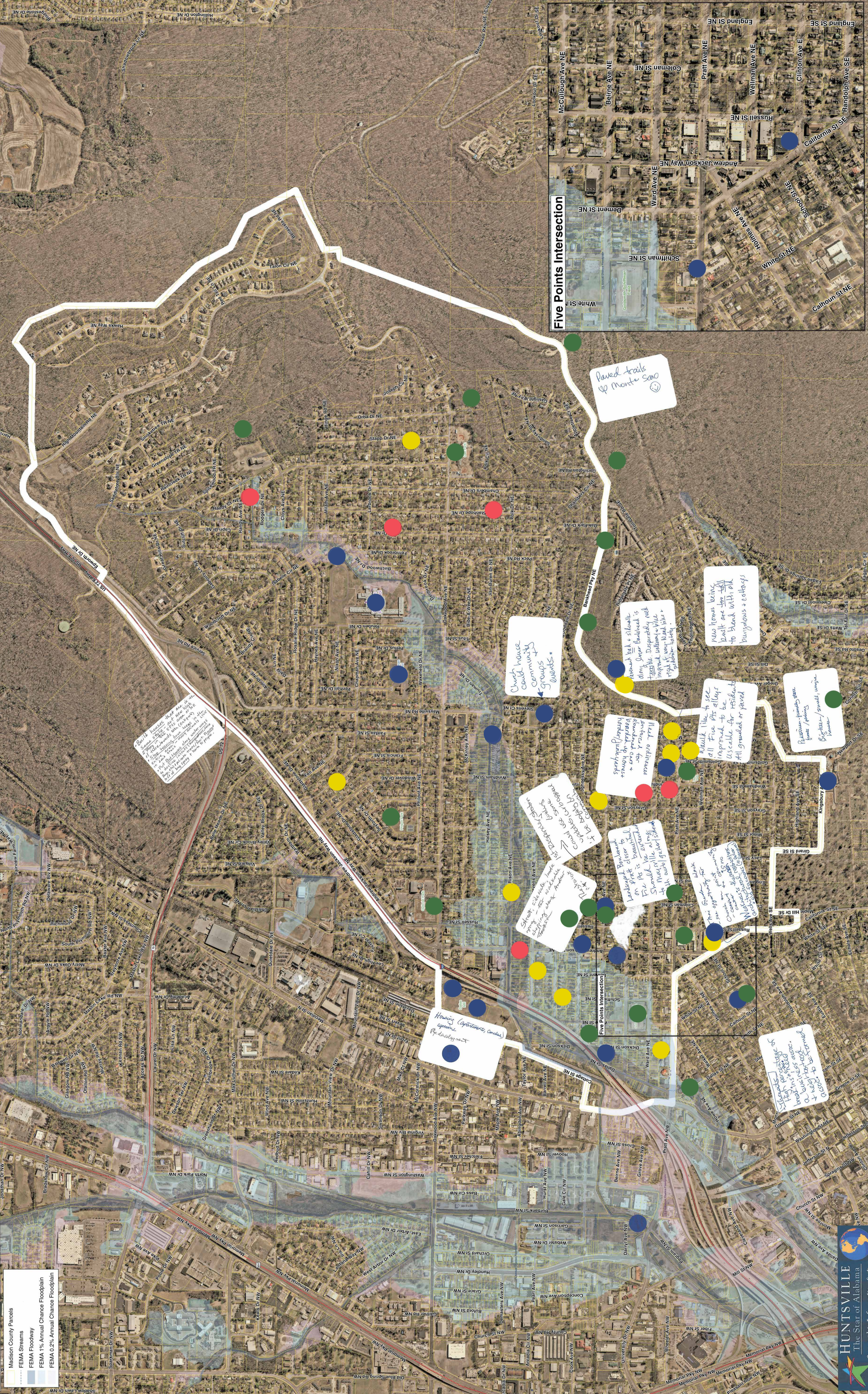


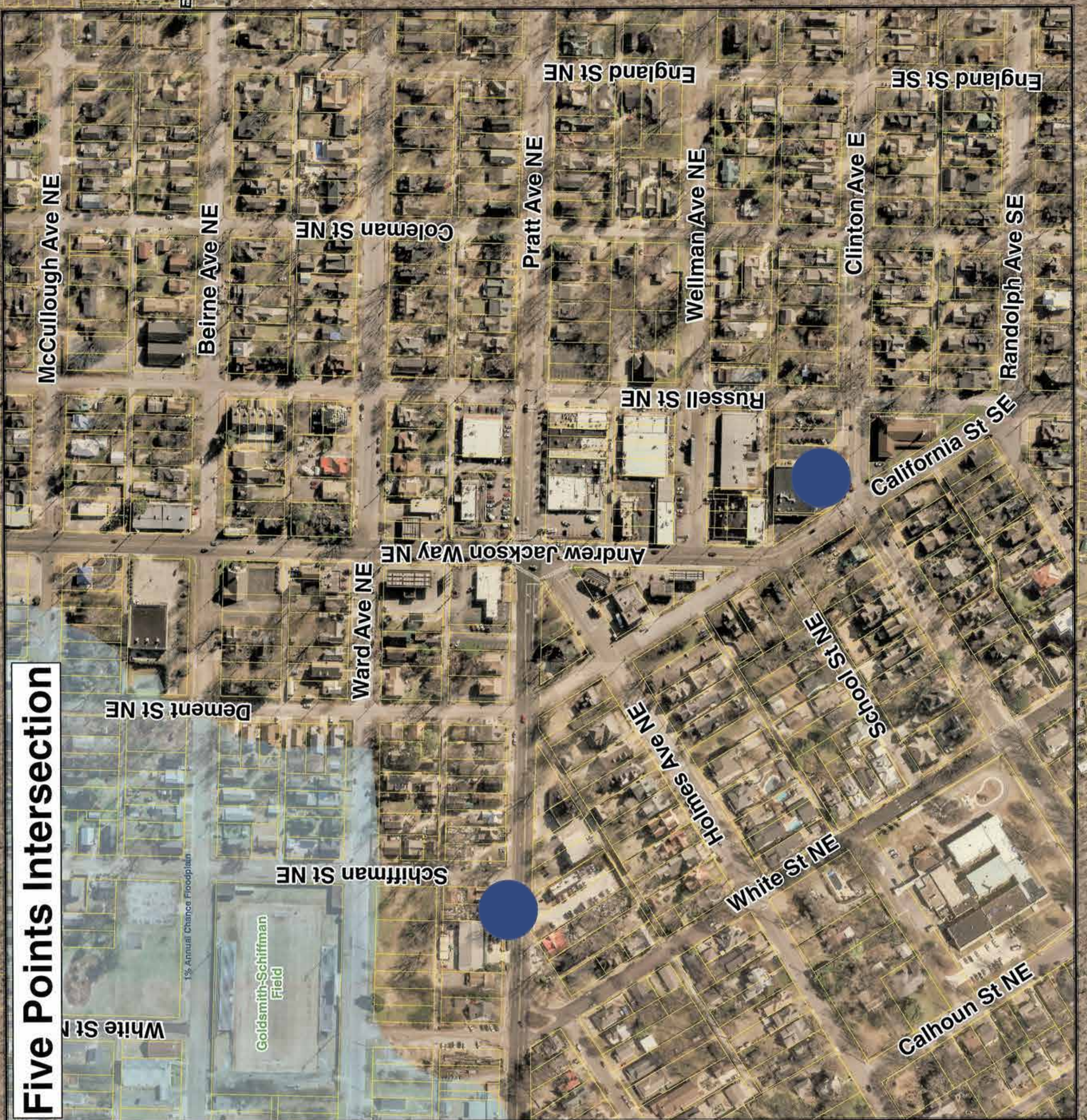
Northeast Huntsville / Five Points Parcels

Asbury's Group

- Madison County Parcels
- FEMA Streams
- FEMA Floodway
- FEMA 1% Annual Chance Floodplain
- FEMA 0.2% Annual Chance Floodplain



Five Points Intersection



Due to location
some of the
properties are
in the 1% flood
zone. This is
a concern for
the future of
the area as
it may impact
the value of
the properties
and the overall
development
of the area.

Church house
could house
community
groups.

Paved trails
up Monte Sano

Need to see
how the
development
will impact
the area.
There are
several
concerns
regarding
the future
of the area.

New homes being
built are too tall
to blend with old
bungalows + cottages

Block like to see
all five the alley
accessible for residents
Hill graded or paved

Residential parking space
front / parking
house

Need to see
how the
development
will impact
the area.
There are
several
concerns
regarding
the future
of the area.

Handicap ramp
on block is beautiful
The lot is a beautiful
Shoreline lot along
to Monte Sano

Need to see
how the
development
will impact
the area.
There are
several
concerns
regarding
the future
of the area.

Housing (apartments, condos)
Redevelopment

Handicap ramp
on block is beautiful
The lot is a beautiful
Shoreline lot along
to Monte Sano